



Flotillin-1 Polyclonal Antibody

Catalog No	YP-Ab-16301
Isotype	IgG
Reactivity	Human; Mouse; Rat
Applications	WB; ELISA
Gene Name	FLOT1
Protein Name	Flotillin-1
Immunogen	Synthesized peptide derived from human Flotillin-1
Specificity	This antibody detects endogenous levels of human Flotillin-1
Formulation	Liquid in PBS containing 50% glycerol, 0.5% BSA and 0.02% sodium azide.
Source	Polyclonal, Rabbit, IgG
Purification	The antibody was affinity-purified from mouse ascites by affinity-chromatography using specific immunogen.
Dilution	WB 1:500-2000, ELISA(peptide)1:5000-20000
Concentration	1 mg/ml
Purity	≥90%
Storage Stability	-20°C/1 year
Synonyms	Flotillin-1
Observed Band	48kD
Cell Pathway	Cell membrane; Peripheral membrane protein . Endosome . Membrane, caveola ; Peripheral membrane protein . Melanosome . Membrane raft . Identified by mass spectrometry in melanosome fractions from stage I to stage IV (PubMed:17081065). Membrane-associated protein of caveola (By similarity). .
Tissue Specificity	Adipose tissue, Adrenal gland, Lung, Peripheral blood leukocyte, Umbilical cord blood,
Function	function: May act as a scaffolding protein within caveolar membranes, functionally participating in formation of caveolae or caveolae-like vesicles., similarity: Belongs to the band 7/mec-2 family. Flotillin subfamily., subcellular location: Membrane-associated protein of caveolae. Identified by mass spectrometry in melanosome fractions from stage I to stage IV., subunit: Heterooligomeric complex of flotillin-1 and flotillin-2 and caveolin-1 and caveolin-2.,
Background	This gene encodes an protein that localizes to the caveolae, which are small domains on the inner cell membranes. This protein plays a role in vesicle trafficking and cell morphology. Alternative splicing results in multiple transcript variants. [provided by RefSeq, Jan 2016],

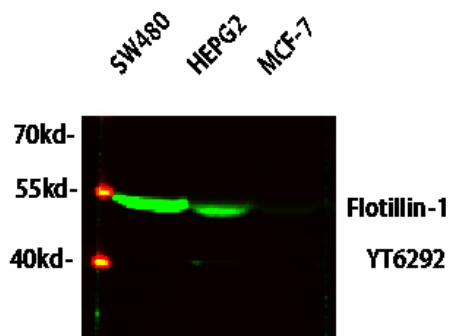
**matters needing attention**

Avoid repeated freezing and thawing!

Usage suggestions

This product can be used in immunological reaction related experiments. For more information, please consult technical personnel.

Products Images



Western blot analysis of various lysates, primary antibody was diluted at 1:1000, 4° over night, secondary antibody(cat: RS23920)was diluted at 1:10000, 37° 1hour.